



External Fume & Heavy Particle Exhaust and Optional Cyclone Quick Setup Guide

PN: 648-249-15 & PN: 648-249-15C



LaserStar Technologies Corporation

2461 Orlando Central Parkway, Orlando, Florida 32809

Phone: 407-248-1142 • Email: Service@LaserStar.net

(Note: The vapor produced when marking, engraving or cutting can be extracted from the lasing chamber and operator's work station using an external filtration and fume exhaust system.)

This open laser engraving system must be connected to an approved external filtration and fume exhaust system (either purchased separately or through LaserStar Technologies®). Never use this machine on non-metallic materials, especially plastics, without the proper air exhaust filter system in place, as required by OSHA regulations.

- I. Carefully unpack the LaserStar Exhaust System (or approved third party exhaust system) and place it next to your machine. Some purchases will include a cyclone adapter for enhanced capturing of heavy particles.



****shown with optional cyclone**

The components for the exhaust system, including the hose, cable kits, and collection bags are stored inside the side door chamber, as shown.



2. Install the two (2) collection bags for the machine.



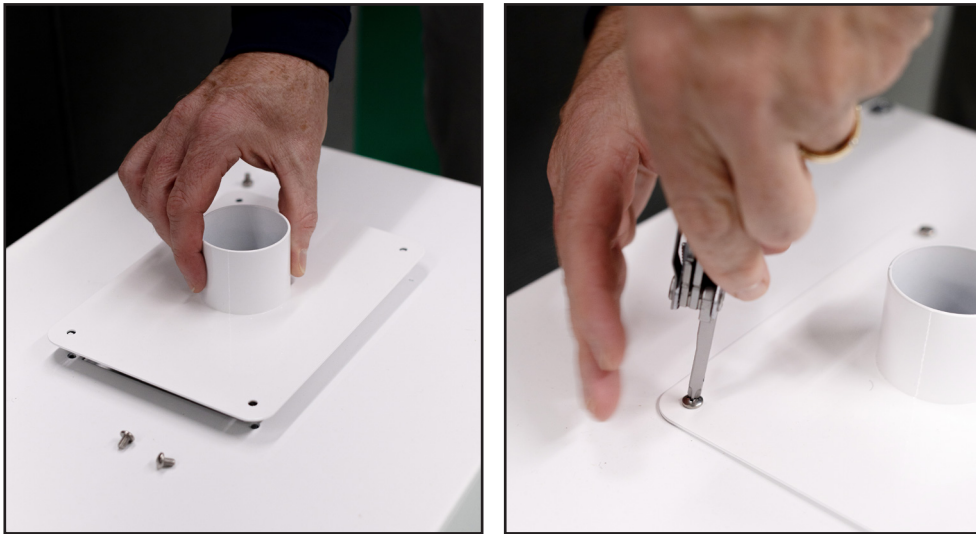
3. Remove the components from inside the white bucket and snap on the lid (Figure 7) to complete the cyclone assembly, as shown (Figure 8).



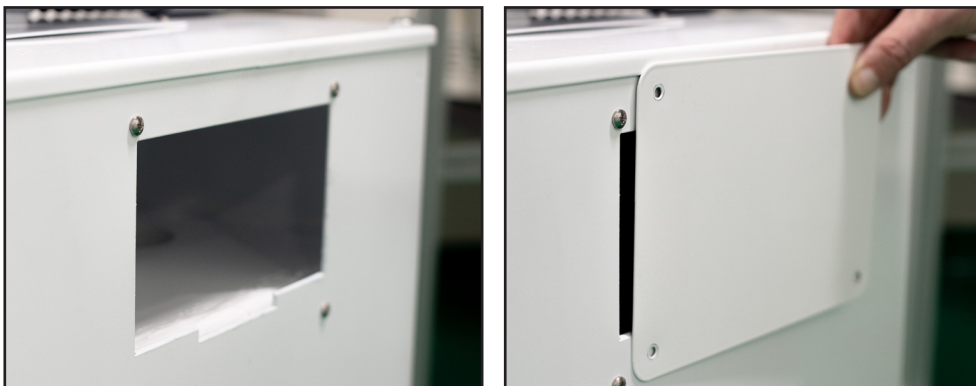
4. There are two (2) positions to install the exhaust hose on the exhaust unit (the top or backside); the most common is the top position. Remove the four (4) screws to remove the cover plate, as shown.



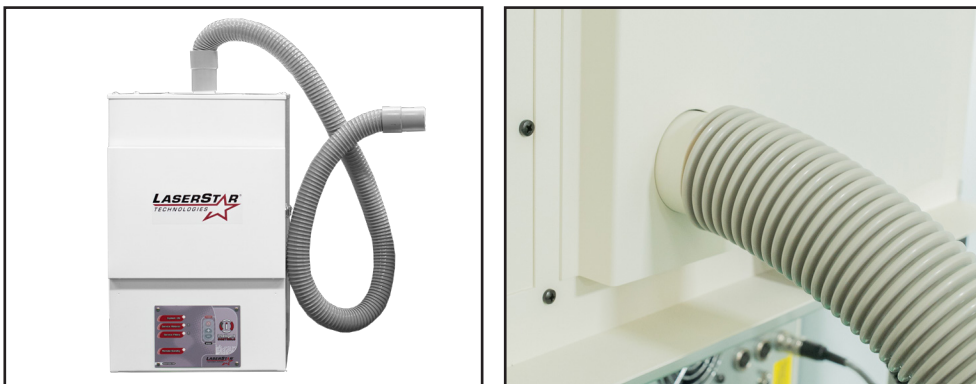
5. Install the hose cover plate on the top of the exhaust unit and re-install the four (4) screws.



6. Lastly, identify the backside of the exhaust unit (Figure 13) and re-install the flat cover plate that was removed from the top (Figure 14). Re-install the four (4) screws provided.



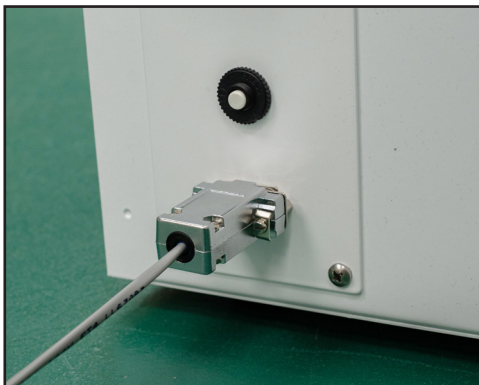
7. Connect the exhaust hose to the exhaust unit, as shown (Figure 15) and then to the rear of the laser system exhaust port (figure 16).



8. If a cyclone adapter was purchased, be sure to connect the exhaust hose to the cyclone input port, as shown below (Figure 17). Next, connect the second exhaust hose from the cyclone adapter to the laser system exhaust port (Figure 18).



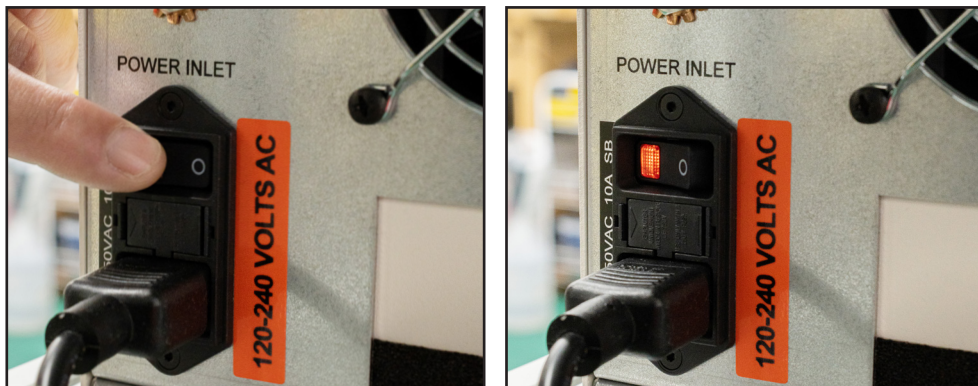
9. Connect the communication cable to the rear of the exhaust unit (Figure 19) and then to the laser system rear panel (Figure 20).



10. Connect the 120V power cord to the rear of the exhaust unit.



- II. To ensure proper operation of the exhaust unit, be sure to first have the laser system powered “ON.”



12. Now, turn the exhaust unit power “ON.”



For additional details on the external exhaust, please review the corresponding operation and maintenance manual.

[illegible]

[illegible]