



FiberCube® 3803 Series Marking System Quick Setup Guide



LaserStar Technologies Corporation

2461 Orlando Central Parkway, Orlando, Florida 32809

Phone: 407-248-1142 • Email: Service@LaserStar.net

Not your laser system? [CLICK HERE](#) for other models.

FIBERCUBE® 3803 SERIES MARKING SYSTEM QUICK SETUP GUIDE INSTRUCTIONS

ITEMS NEEDED: Phillips Head Screwdriver or Power Drill with Phillips Head Drill Bit, 6mm Allen Bit & 7/16" Socket Bit, 5mm & 6mm Allen Wrench, Scissors or Snips, Box Cutter or Knife, Step Ladder, Ramp

INSPECTION

1. Before opening the shipping container, be sure to inspect the outside of the crate for apparent damage that may have occurred in transit. If you discover damage, immediately contact LaserStar's Service Department.
2. Identify the TIP-N-TELL indicator (located on the outside of the shipping crate). Check to see whether blue beads are present in the top portion of the arrow on the TIP-N-TELL. If you notice blue beads in this area, immediately contact LaserStar's Service Department.



**No blue beads present:
(no tipping of crate)**



**Blue beads present:
(crate has been tipped)**

3. Identify the SHOCKWATCH warning sticker (located on the outside of the shipping crate). Check to see whether the tube in the center of the SHOCKWATCH warning is red. If you find the center of this tube is red, immediately contact LaserStar's Service Department.



**Tube is not red:
(no shock warning)**



**Tube is red:
(shock warning)**

UNPACKING

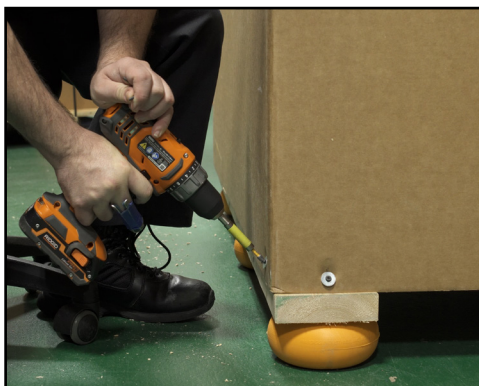
4. With scissors, snips, or a knife, cut the banding straps on the outside of the shipping container.



5. Using a step ladder, carefully remove the top cover from the crate.



6. Remove the screws from the bottom of the skid. **(Note: A power drill with a Phillips head drill bit is helpful.)**



7. Using a knife, carefully cut the corrugated cover, slicing downward at the overlapping corner.



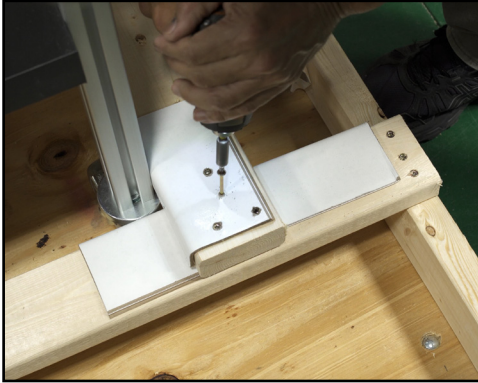
8. Remove the ratcheting straps that secure the laser to the skid base.



9. With scissors or a knife, gently cut any shrink wrap that is affixed to the plastic cover; remove the cover from the machine. **(Note: Be sure to save the plastic cover to protect the equipment from dust when it's not in use.)** Gently remove any remaining shrink wrap. **(Note: Be careful not to cut or damage the laser.)**



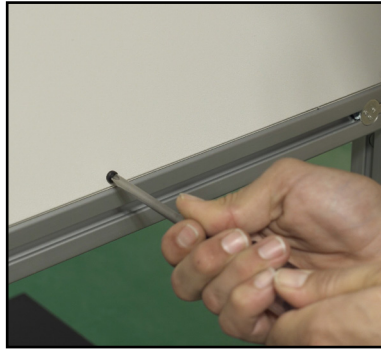
10. There are two (2) 2x4 braces that secure the laser to the skid base. Using a Phillips head drill bit, remove the bracket screws from the skid. **(Note: A power drill is recommended.)**



11. Remove each of the boxes located beneath the laser system. With two people, you can now move the laser off the skid base, gently lowering the wheels onto the floor (we recommend the use of a ramp to roll the laser off the skid). Wheel the laser to the desired location and reset the breaks.



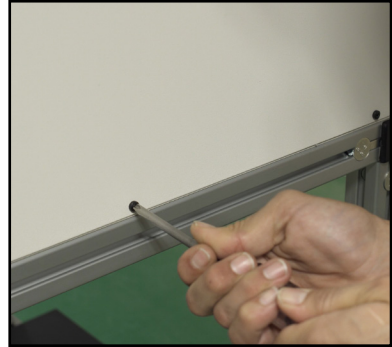
12. Moving to the back of the laser, remove the rear panel. You will need a Phillips head screwdriver for this step. **(Note: You may need two (2) people to complete this step.)**



13. Before opening the front door of the laser, you will need to remove the two (2) counterweight stabilizer M-5 screws (located in the top corners on the rear of the laser).



14. Once the counterweight screws have been removed, reinstall the rear panel. **(Note: Take note of the exhaust clearance and cable covers, located inside the chamber.)**



15. Locate the swing arm table on the side of the laser stand; loosen the tension knob and adjust to the desired position.



SETUP

16. Locate and open the box labeled “accessory kit” and retrieve the following items: keys, remote interlock, power cord, USB hub, and USB cables.



17. Locate the box for the laptop and remove the computer and power cable provided. Place the laptop on the swing platform (located on the side of the laser).



18. Retrieve the USB hub and plug in the power cable and mini USB. Plug the other end of the power cable into a 110V outlet. Also plug the free end of the USB cable into the laptop.



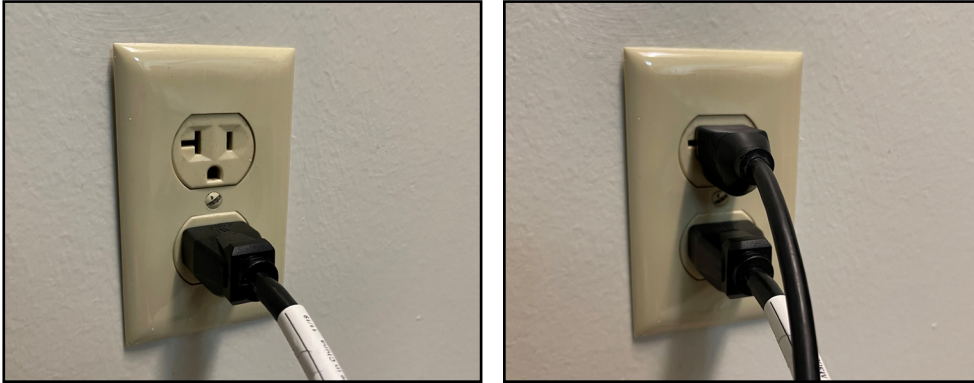
19. Locate the two (2) USB cables provided. Connect one to the “USB LASER” port and the other to the “USB AXIS” port. Plug the two free ends into the laptop.



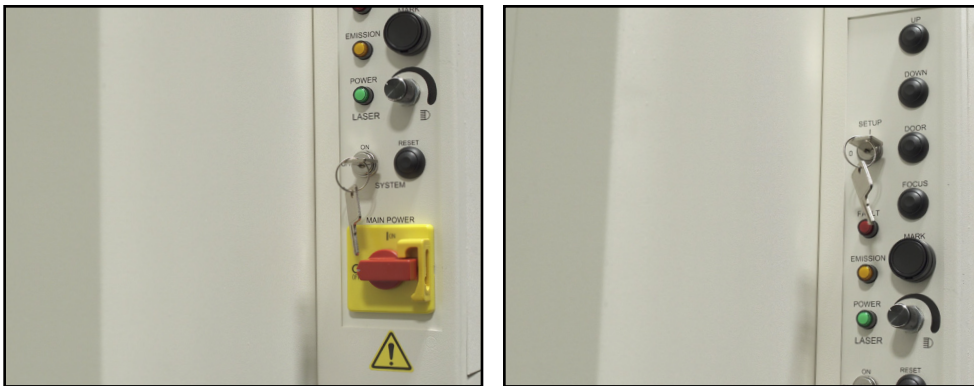
20. Retrieve the remote interlock component and power cable; insert each into the rear of the laser.



21. Take both the laser and laptop power cables and plug them into a 110V wall outlet.



22. Retrieve the keys from the accessory kit; there is a smaller and larger key. Insert the small key into the “Setup” Key Switch and the large key into the “System” Key Switch.



23. Power up the laser by turning the Main Power Switch (red and yellow switch) to the “ON” position. Turn the “System” Key Switch to the “ON” position. Turn the “Setup” Key Switch to the “ON” position.



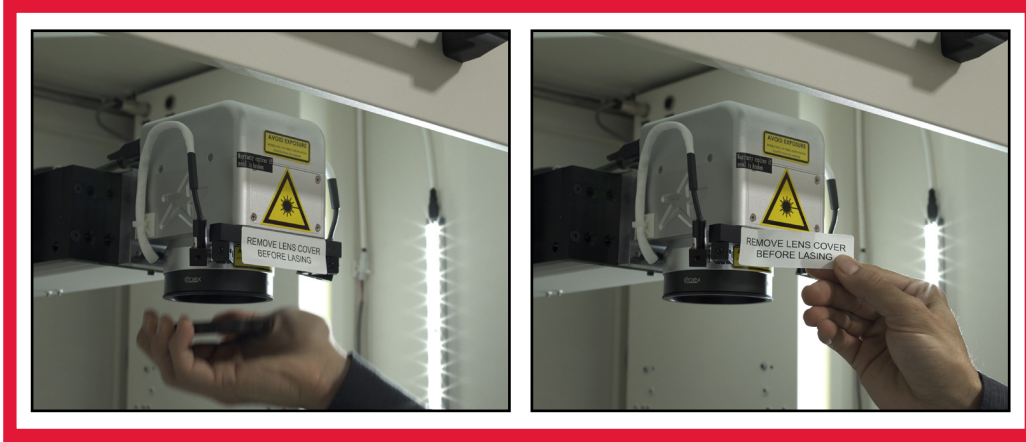
- 24.** Push the “Reset” button to activate the laser. Open the door of the laser using the “Door” controls.



- 25.** Once the door is fully open, press the “Focus” button and the “Up” button until the focus head has been raised 2” to 3”. Now, remove the foam block.



26. Note the instructions on the front of the laser's scan head; remove the lens cover from the focus lens. Once the lens cover has been removed, you may remove this label.



(Note: The vapor produced when marking, engraving or cutting can be extracted from the lasing chamber and operator's work station using an external filtration and fume exhaust system.)

This open laser engraving system must be connected to an approved external filtration and fume exhaust system (either purchased separately or through LaserStar Technologies®). Never use this machine on non-metallic materials, especially plastics, without the proper air exhaust filter system in place, as required by OSHA regulations.

27. Unpack your purchased (or previously owned, approved) fume exhaust system and place it next to the machine (if a cyclone adapter option was purchased, setup appropriately).



- 28.** Connect the exhaust hose and then connect to the exhaust unit and rear of the lasing chamber, as shown.



- 29.** Be sure to properly position the interior chamber adjustable exhaust tube to the required marking area to ensure maximum suction.



Congratulations, you are now ready to begin using your laser marking system! Please proceed to LaserStar Academy to begin your online training.



LASERSTAR **ACADEMY**

Teaching You To Harness The Power Of Hot Light

LaserStar Academy is designed to be our clients' "First Reference" for software and systems training; user guides and operation manuals; maintenance videos & service guides; and FAQ resources.

Our goal is to provide clients with a solid foundation of fundamental laser welding and engraving skill sets while providing a real time online resource for LaserStar's worldwide customer base.

www.laserstaracademy.com



LASERSTAR.NET

FLORIDA (HQ)

2461 Orlando Central Parkway
Orlando, Florida 32809 USA
407-248-1142 Fax: 866-708-5274
Email: sales@laserstar.net



LASERSTAR **ACADEMY**

LASERSTARACADEMY.COM

RHODE ISLAND

100 Jefferson Boulevard, Suite 315
Warwick, Rhode Island 02888 USA
407-248-1142 Fax: 866-516-3043
Email: sales@laserstar.net



LASERSTARTV

LASERSTAR.TV

CALIFORNIA

20 East Foothill Boulevard, Suite 128
Arcadia, California 91006 USA
407-248-1142 Fax: 866-347-9034
Email: sales@laserstar.net



FOLLOW LASERSTARTV

