



FIBERCUBE® OPEN MARKING+ENGRAVING SYSTEM

3201 Series



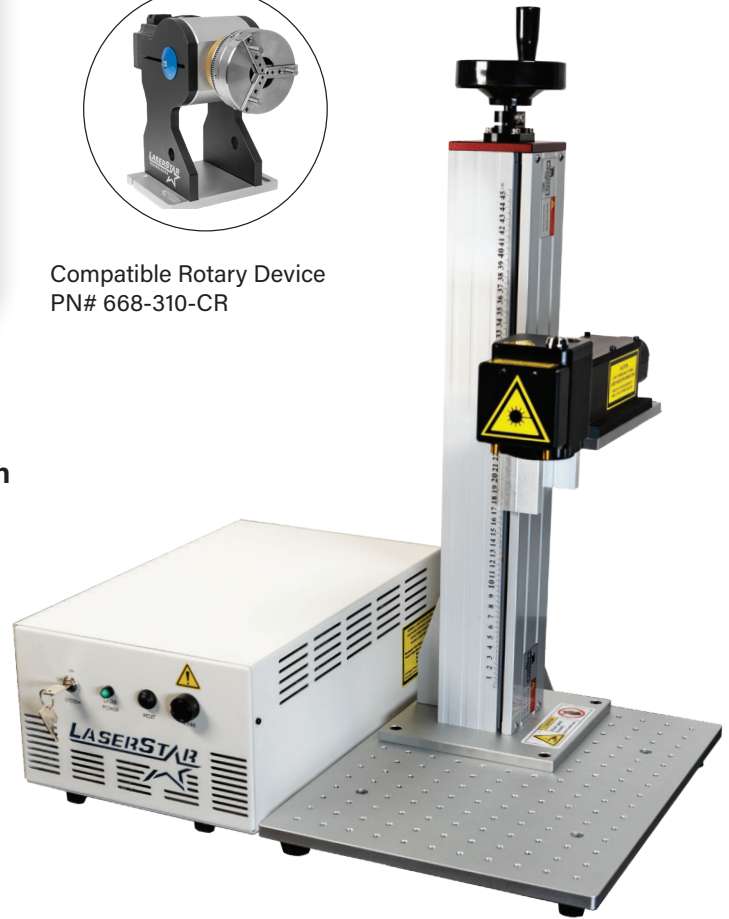
★ HIGHLIGHTS

- ✓ Compact All-in-One Laser Design
- ✓ Maintenance Free 30 Watt Fiber Laser Source
- ✓ Select StarFX or EZCAD2 Software
- ✓ F-Theta Lens Available: 100mm, 160mm, 254mm
- ✓ Designed, Engineered & Built in USA



Compatible Rotary Device
PN# 668-310-CR

- ★ **Air-Cooled, Compact, Portable System**
- ★ **7K Digital High Speed Scanner Technology with Integrated Red Pointing Focal Plane Kit**
- ★ **Manual Lifting Column w/ Scale**
- ★ **Customer Supplied Laptop Required**
- ★ **Rotary Device Compatible**
- ★ **2 Year Limited Warranty**



- ✓ Logos, Symbols, Barcodes, 2D Matrix, UID
- ✓ True Type Fonts, Serial Numbers, Simple Text
- ✓ Bitmaps, Graphics, Photos, CAD-Files (HPGL)
- ✓ Mark or Engrave Flat or Cylinder Surfaces
- ✓ Deep Engrave or Cut a Variety of Materials
- ✓ Advanced Color Marking on Many Materials
- ✓ Complete Technical Support by LaserStar



LASERSTAR.NET



LASERSTAR ACADEMY™

Our education courses are designed to provide you with a solid foundation of fundamental laser skill sets to immediately gain a revenue impact with your new laser device.

LaserStarAcademy.com

Technical Specifications at www.LaserStar.net

FIBERCUBE® OPEN MARKING+ENGRAVING SYSTEM

3201 Series



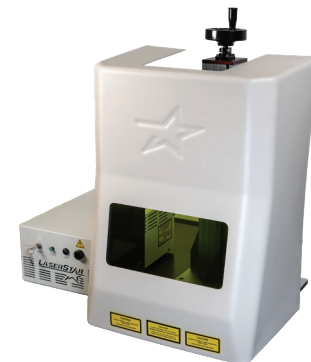
Platform	Class 4 / Open
Laser Engine	Pulse Fiber Laser
Wavelength	1064 nm
Pulse Frequency	Model Dependent
Output Power	30 Watts
Focusing Optics	100, 163 , 254 (mm*)
Cooling Capacity	Air Cooled
Profile Laser (optional)	Visible, red-beam pilot laser
Laser Safety Compliance	FDA (CDRH), CE
Base Plate Dimensions	15.5"L x 17.5"W x 31"H / 65cm x 44cm x 79cm
Country of Origin	Designed, Engineered & Built in USA
Warranty Coverage	As Quoted

* Additional F-Theta Flat Field Lenses available upon request
 Note: the technical specs can vary depending on the laser.

FiberCube® Laser Marking+Engraving Systems are an effective tool for **hi-speed direct part marking, traceability, branding and product adornment** in an **open** workspace design. Built to the highest standards of **quality**, the 3201 series robust design is an excellent solution for both **short** and **long** run product cycles.

FiberCube® Systems offer state-of-the-art technology with the highest **laser beam quality** and **80,000+ hours** of laser engine maintenance-free operation.

High **precision** markings are achievable on almost **any type of material** including **gold, platinum, silver, brass, stainless steel, carbide, copper, titanium, and aluminum**, as well as a wide variety of **medical-grade alloys and plastics**.



Ask about Optional Safety Shield - PN: 678-100



LASERSTAR.NET

FLORIDA (HQ)

2461 Orlando Central Parkway
 Orlando, Florida 32809 USA
 407-248-1142 Fax: 866-708-5274
 Email: sales@laserstar.net



LASERSTARACADMEY.NET

RHODE ISLAND

100 Jefferson Boulevard, Suite 315
 Warwick, Rhode Island 02888 USA
 407-248-1142 Fax: 866-516-3043
 Email: sales@laserstar.net



LASERSTAR.TV

CALIFORNIA

20 East Foothill Boulevard, Suite 128
 Arcadia, California 91006 USA
 407-248-1142 Fax: 866-347-0934
 Email: sales@laserstar.net



FOLLOW LASERSTAR TV

